

State of Wyoming Corner Record

(In compliance with the **CORNER PERPETUATION AND FILING ACT**, Wyoming Statutes, 1997 Section 33-29-140 et. seq., and the Rules and Regulations of the Board of Professional Engineers and Professional Land Surveyors)

Reverse side of this form may be used if more space is needed.

Record of original survey and citation of source of historical information (if corner is lost or obliterated). Description of corner monumentation evidence found and/or monument and accessories established to perpetuate the location of this corner. Sketch of relative location of monument, accessories, and reference points with course and distance to adjacent corner(s) (if determined in this survey). Method and rationale for reestablishment of lost or obliterated corner.

RECORD OF ORIGINAL SURVEY AND SUBSEQUENT HISTORY: Date of Survey: 1870 Surveyor: John B. Thomas

Set a Granite Boulder 18x10x6 for corner to Secs, 11-12-13-14.

INSTRUMENT NUMBERS OF RECORDS PREVIOUSLY RECORDED OR FILING DATA:

Record: 1989 Surveyor: John Stell

Section corner shown as US MR Monument on Western Hills 12th plat.

Record: 078912 -1990 Surveyor: Doyle G. Abrahamson

Found 6" sq. conc. monu. w/ #3 rebar in center with "13" scribed on N & S faces proj. 12".

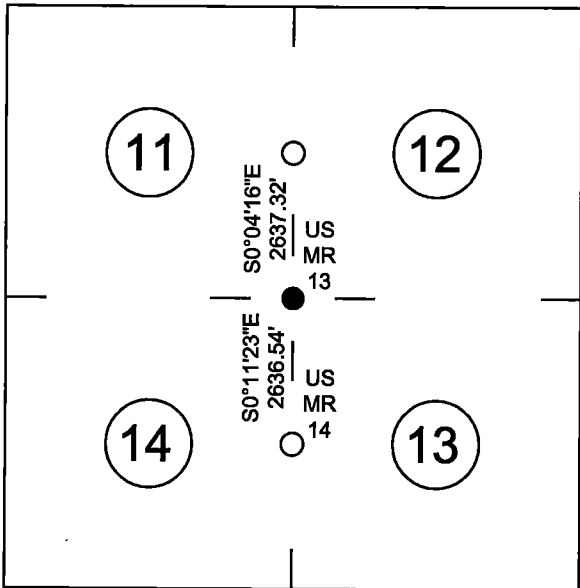
Set PSCO tag in fe. post 4.5 feet North of monument.

DESCRIPTION OF CORNER EVIDENCE FOUND:

None found.

NAD 83(2011) coordinates for this corner:
 Latitude = $N41^{\circ}11'21.820''$ Longitude = $W104^{\circ}50'51.762''$
 NOTE: These coordinates are to be used as a search tool only.

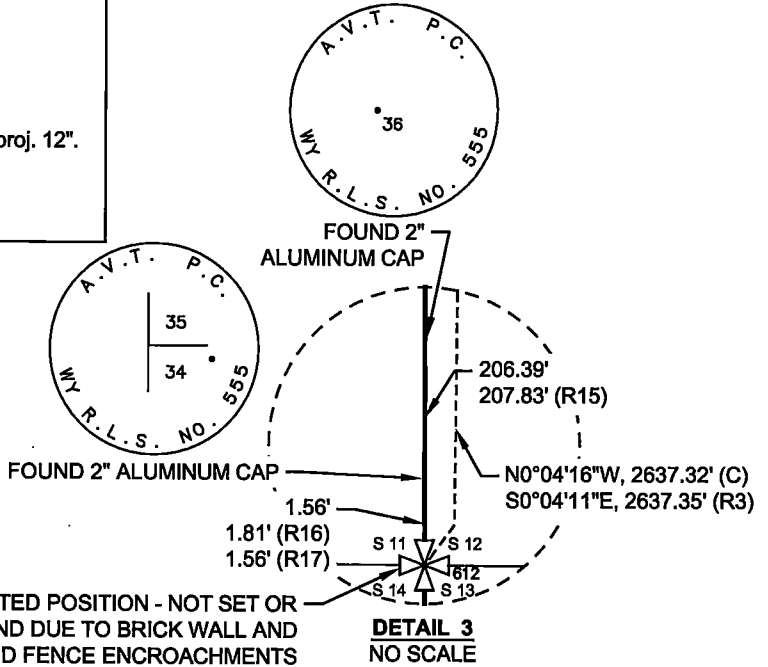
Monument location



Date of Field Work: 10/20/17

Office Reference: =

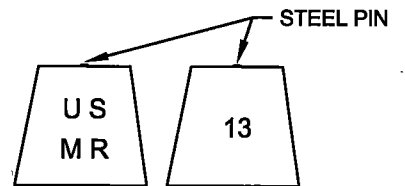
Monument Detail



CALCULATED POSITION - NOT SET OR FOUND DUE TO BRICK WALL AND WOOD FENCE ENCROACHMENTS

DETAIL 3
NO SCALE

Record Monument Inscription



RECORD - 6"x6" CONCRETE MONUMENT WITH 1/2" STEEL PIN IN CENTER MARKED "US MR" AND CORNER NUMBER 13.

BASIS OF BEARING: WYOMING STATE PLANE EAST ZONE GRID NORTH.

Cross Index Plat

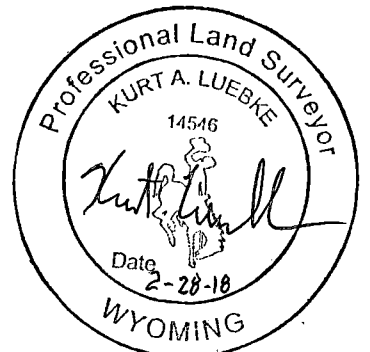
1	2	3	4	5	6	7	8	9	10	11	12	13	14	15	16	17	18	19	20	21	22	23	24	25	
A	+	+	+	+	+	+	+	+	+	+	+	+	+	+	+	+	+	+	+	+	+	+	+	+	+
B	+	+	+	+	+	+	+	+	+	+	+	+	+	+	+	+	+	+	+	+	+	+	+	+	+
C	+	6	+	5	+	4	+	3	+	2	+	1	+	+	+	+	+	+	+	+	+	+	+	+	+
D	+	+	+	+	+	+	+	+	+	+	+	+	+	+	+	+	+	+	+	+	+	+	+	+	+
E	+	+	+	+	+	+	+	+	+	+	+	+	+	+	+	+	+	+	+	+	+	+	+	+	+
F	+	+	+	+	+	+	+	+	+	+	+	+	+	+	+	+	+	+	+	+	+	+	+	+	+
G	+	7	+	8	+	9	+	10	+	11	+	12	+	+	+	+	+	+	+	+	+	+	+	+	+
H	+	+	+	+	+	+	+	+	+	+	+	+	+	+	+	+	+	+	+	+	+	+	+	+	+
J	+	+	+	+	+	+	+	+	+	+	+	+	+	+	+	+	+	+	+	+	+	+	+	+	+
K	+	+	+	+	+	+	+	+	+	+	+	+	+	+	+	+	+	+	+	+	+	+	+	+	+
L	+	18	+	17	+	16	+	15	+	14	+	13	+	+	+	+	+	+	+	+	+	+	+	+	+
M	+	+	+	+	+	+	+	+	+	+	+	+	+	+	+	+	+	+	+	+	+	+	+	+	+
N	+	+	+	+	+	+	+	+	+	+	+	+	+	+	+	+	+	+	+	+	+	+	+	+	+
O	+	+	+	+	+	+	+	+	+	+	+	+	+	+	+	+	+	+	+	+	+	+	+	+	+
P	+	19	+	20	+	21	+	22	+	23	+	24	+	+	+	+	+	+	+	+	+	+	+	+	+
Q	+	+	+	+	+	+	+	+	+	+	+	+	+	+	+	+	+	+	+	+	+	+	+	+	+
R	+	+	+	+	+	+	+	+	+	+	+	+	+	+	+	+	+	+	+	+	+	+	+	+	+
S	+	+	+	+	+	+	+	+	+	+	+	+	+	+	+	+	+	+	+	+	+	+	+	+	+
T	+	30	+	29	+	28	+	27	+	26	+	25	+	+	+	+	+	+	+	+	+	+	+	+	+
U	+	+	+	+	+	+	+	+	+	+	+	+	+	+	+	+	+	+	+	+	+	+	+	+	+
V	+	+	+	+	+	+	+	+	+	+	+	+	+	+	+	+	+	+	+	+	+	+	+	+	+
W	+	+	+	+	+	+	+	+	+	+	+	+	+	+	+	+	+	+	+	+	+	+	+	+	+
X	+	31	+	32	+	33	+	34	+	35	+	36	+	+	+	+	+	+	+	+	+	+	+	+	+
Y	+	+	+	+	+	+	+	+	+	+	+	+	+	+	+	+	+	+	+	+	+	+	+	+	+
Z	1	2	3	4	5	6	7	8	9	10	11	12	13	14	15	16	17	18	19	20	21	22	23	24	25

Firm/Agency, Address

KURT LUEBKE, PLS 14546
D.J.&A P.C.
3203 RUSSELL ST
MISSOULA, MT 59801
 Phone Number: 406-721-4320

This corner record was prepared by me or under my direction and supervision.

SEAL & SIGNATURE



RECP #: 726313
 RECORDED 3/5/2018 AT 10:31 AM BK# 2577 PG# 154
 Debra K. Lee, CLERK OF LARAMIE COUNTY, WY PAGE 1 OF 1

Corner Name Northwest Corner Section 13, T 14 N, R 67 W, 6th P.M.

Cross-Index No.: J-21

County: Laramie Wyoming

SBRPEPLS/PLSW: March 1994; PLSW January 1998